



LEMAITRE

2019

**SAFETY
FOOTWEAR
CATALOGUE**

AN OPEN LETTER TO ALL WORKERS

WORK, IS NOT JUST WORK.

WORK, IS A REFLECTION OF WHO WE ARE.

IT'S HOW WE ARE SEEN AND WHAT WE WANT TO BE KNOWN FOR.

IT'S OUR EXPRESSION.

**AN HONEST DAY'S WORK IS ONE THAT WE CAN SAY WITH PRIDE,
ONE THAT IS DEPENDABLE.**

RESPECTFUL.

HARD-WORKING.

IT'S APPRECIATION FOR A JOB WELL DONE.

IT'S OUR BREAD AND BUTTER.

IT'S WHAT OUR FAMILY CHAMPIONS US FOR.

WE ARE RELIED ON FOR OUR EXPERT SKILLS.

WE PRIDE OURSELVES ON OUR WORKMANSHIP.

FROM STITCH TO STEP, WE ACKNOWLEDGE THOSE WHO WORK JUST AS HARD.

FROM ONE WORKER, TO ANOTHER.

LEMAITRE SAFETY FOOTWEAR.

To us, workers are individuals who dedicate their time to their craft, appreciating the true value of good workmanship, with pride and a mutual respect for all workers across industries. It's an understanding that the result of their work goes on to affect the safety and wellbeing of others. Together, workers drive industry forward to build a stronger South Africa.

A photograph of two men in a factory setting. The man on the left is older, with grey hair, wearing a dark short-sleeved shirt and dark trousers. The man on the right is younger, wearing a blue long-sleeved work shirt and blue trousers. They are both holding a large, dark metal pipe horizontally. In the background, there are shelves filled with various metal pipes and components. The lighting is dramatic, with strong highlights and deep shadows.

QUALITY.

It isn't a word we just throw around. At Lemaitre, quality is irrefutable. It's what we strive for and insist upon. The quality of the materials used to create a pair of Lemaitre safety footwear is carefully selected from the get go, just like the quality of materials you select for your business. But it goes far beyond that. It begins with the quality of our workers. From the moment we step into the factory, our understanding of keeping your people safe and keeping your industry going is what drives the quality and pride of our workmanship.



PRECISION.

Every step in the production of our safety footwear receives utmost dedication and precision. Our workers take pride in what they do as it is a reflection of their skilled craft. From stitch to step, we care about what we do, always. The reason behind that is simple: our safety footwear is made by workers for workers, the people who we care for most.

CONTENTS

- **INTRODUCTION**
 - BRAND 2
 - SHOE DISSECTION 7-8
- **RAPTOR RANGE | TORSION CONTROL 9-16**
 - HAWK 11
 - EAGLE 11
 - FALCON 12
 - HERCULES 12
 - OWL 15
 - KITE 15
 - HIKER 16
 - SENTINEL 16
- **APOLLO RANGE | SLIP-RESISTANCE 17-22**
 - CLOG 19
 - STRIKER 19
 - SECURITY BOOT 21
 - SPORT 21
 - GALAXY 22
 - LIMPOPO 22
- **MAXECO RANGE | ALL-ROUND SAFETY 23-31**
 - ROBUST 25
 - MAXECO 25
 - METAGUARD 27
 - TURTLE 27
 - ZEUS 28
 - EROS 28
 - MAXIMUS 31
 - SPARTACUS 31
- **PARABOLIC RANGE | COMFORT AND ANTI-FATIGUE SUPPORT 33-37**
 - ODYSSEY 35
 - NOMAD 35
 - EXPLORER 36
 - HUNTER 36
 - QUEST 37
 - OUTENIQUA 37
- **INDUSTRY STANDARDS AND ACCREDITATIONS 39**
- **CHEMICAL RESISTANCE TABLE 40**

TECHNOLOGY THAT PUTS THE SAFE IN SAFETY FOOTWEAR

Here is a brief overview of the technologies incorporated in our various safety footwear ranges that are SANS 20345 approved.

This serves as a representation of different technologies used across the ranges. Please refer to the individual product spec sheet for an accurate reflection of the technologies incorporated in a particular product.

SHOE DISSECTION

METAGUARD

- Polycarbon metaguard for enhanced protection of the metatarsal bones

UPPER

- Genuine full-grain leather
- Genuine split leather
- Mesh fabric

VAMP LINING

- Non-woven synthetic fibre for enhanced comfort and breathability
- Punch detail for enhanced breathability

TOE CAP

- Steel - resistant to an impact of 200 joules of pressure and 15Kn of compression
- Wide or extra-wide fitting
- Fitted with an edge covering for enhanced comfort
- Available in soft toe

ABRASION PREVENTION

- Anti-toe and heel scuff

TOP SOCK

- Durable polyester material
- Removable and replaceable
- Anti-fungal
- Anti-bacterial
- Anti-static
- Scented

TORSION CONTROL INSERTS

- For balance to keep sure footed on uneven ground

SOLE UNIT

Our four safety shoe ranges each offer a unique sole with properties to suit your needs and working conditions. All soles are directly injected, double density Polyurethane

- Raptor sole unit for torsion control
- Apollo sole unit for slip-resistance
- Maxeco and Gladius sole unit for all-round safety
- Parabolic sole unit for comfort and anti-fatigue



TONGUE

- Bellows / Gibson tongue
- Padded for comfort

COLLAR

- Genuine leather
- Polyurethane coated material
- Mesh fabric
- Padding for comfort

QUARTER LINING

- Non-woven material for comfort and breathability
- Foam support for enhanced comfort
- Punch detail for enhanced breathability

HEEL STIFFENER

- For shape longevity

IN SOCK

- Anti-static non-woven material

STEEL MIDSOLE

- Steel midsole - resistant to a force of 1100 Newtons



RAPTOR APOLLO MAXECO PARABOLIC



1

RAPTOR RANGE

TORSION CONTROL

The Lemaitre Raptor range, with torsion control, provides the perfect fit for environments where uneven terrain is prevalent, such as construction and agriculture.

Whether on the ground or traversing scaffolding or ladders, the built-in thermoplastic polyurethane (TPU) plate available in the midsole of some of these safety shoes and boots are designed around the pressure points exerted on the arch of the foot and assists in giving the foot added support and control. Keep hard-working feet safely secured in Lemaitre's range of torsion controlled safety footwear.



HAWK

8024 - STC | 8034 - SMS
BLACK AND GREY | SIZE: 5-12

Designed with the construction worker in mind, the Hawk is fitted with an aggressive TPU grip in the arch area of the sole for optimum support on scaffolding and ladders. Incorporating a padded collar and padded bellows tongue for enhanced comfort as well as punch detail in the upper for improved breathability, the shoe also features an anti-toe and heel scuff for enhanced durability.



UPPER

- Full-grain leather upper for enhanced durability
- Padded collar for improved comfort
- Padded bellows tongue for added comfort and enhanced defense against debris entering the boot
- Punch detail for enhanced breathability
- 4 pair lace guides and 3 set metal hooks
- Anti-toe and heel scuff for enhanced durability
- Heel stiffener for shape longevity

TOP SOCK

- Anti-fungal, anti-bacterial and anti-static top sock

MIDSOLE

- Shank reinforcement for arch support
- Available with a steel midsole - 8034

TOE CAP

- Steel – extra-wide fitting

SOLE

- Double Density PU/PU with TPU inserts
- Heat resistant to 95° C
- SRA Slip-resistance rating
- Anti-static
- Acid, oil and chemical resistance rating – refer to table on p.40

SANS / ISO 20345

FALCON

8026 - STC
BLACK WITH RED PIPING | SIZE: 5-12

The Falcon shoe, with iconic red piping, boasts a padded collar and padded bellows tongue for increased comfort to the wearer. The aggressive grip design, by means of TPU inserts in the arch area of the sole, ensures that this is the perfect fit for those making regular use of ladders and scaffolding.



UPPER

- Full-grain leather upper for enhanced durability
- Padded collar for improved comfort
- Padded bellows tongue for added comfort and enhanced defense against debris entering the boot
- 2 sets lace guides & 2 sets Ghillie loops
- Heel stiffener for shape longevity

TOP SOCK

- Anti-fungal, anti-bacterial and anti-static top sock

MIDSOLE

- Shank reinforcement for arch support

TOE CAP

- Steel – extra-wide fitting

SOLE

- Double Density PU/PU with TPU inserts
- Heat resistant to 95° C
- SRA Slip-resistance rating
- Anti-static
- Acid, oil and chemical resistance rating – refer to table on p.40

SANS / ISO 20345

EAGLE

8025 - STC | 8035 - SMS
BLACK AND GREY | SIZE: 5-12

The partner boot to the Hawk shoe, the Eagle, with punch detail for enhanced breathability, is designed with the construction worker in mind. Fitted with an aggressive TPU grip in the arch area of the sole for optimum support on scaffolding and ladders the shoe further incorporates a padded collar and padded bellows tongue for enhanced comfort as well as an anti-toe and heel scuff for enhanced durability.



UPPER

- Full-grain leather upper for enhanced durability
- Padded collar for improved comfort
- Padded bellows tongue for added comfort and enhanced defense against debris entering the boot
- Punch detail for enhanced breathability
- 3 pair lace guides and 3 sets metal hooks
- Anti-toe and heel scuff for enhanced durability
- Heel stiffener for shape longevity

TOP SOCK

- Anti-fungal, anti-bacterial and anti-static top sock

MIDSOLE

- Shank reinforcement for arch support
- Available with a steel midsole – 8035

TOE CAP

- Steel – extra-wide fitting

SOLE

- Double Density PU/PU with TPU inserts
- Heat resistant to 95° C
- SRA Slip-resistance rating
- Anti-static
- Acid, oil and chemical resistance rating – refer to table on p.40

SANS / ISO 20345

HERCULES

8049 - STC | 8048 - SOFT TOE
BLACK OR BROWN OR TAN | SIZE: 5-12

Revered as the go-to boot in the agricultural sector, the Hercules Chelsea has found fame amongst farmers in SA. The genuine leather upper ensures durability, whilst the Raptor sole unit provides the traction control needed in changing farming terrains. The unique, low cut of the collar and elastic side gussets, allow for easy foot entry and accommodates a higher bridge making this ideal for the wider South African foot.



UPPER

- Full-grain leather upper for enhanced durability
- Low-cut collar for improved comfort
- Elastic gussets and pull tabs for easy entry and removal of the boot
- Double stitched for enhanced durability
- Heel stiffener for shape longevity

TOP SOCK

- Anti-fungal, anti-bacterial and anti-static top sock

MIDSOLE

- Shank reinforcement for arch support

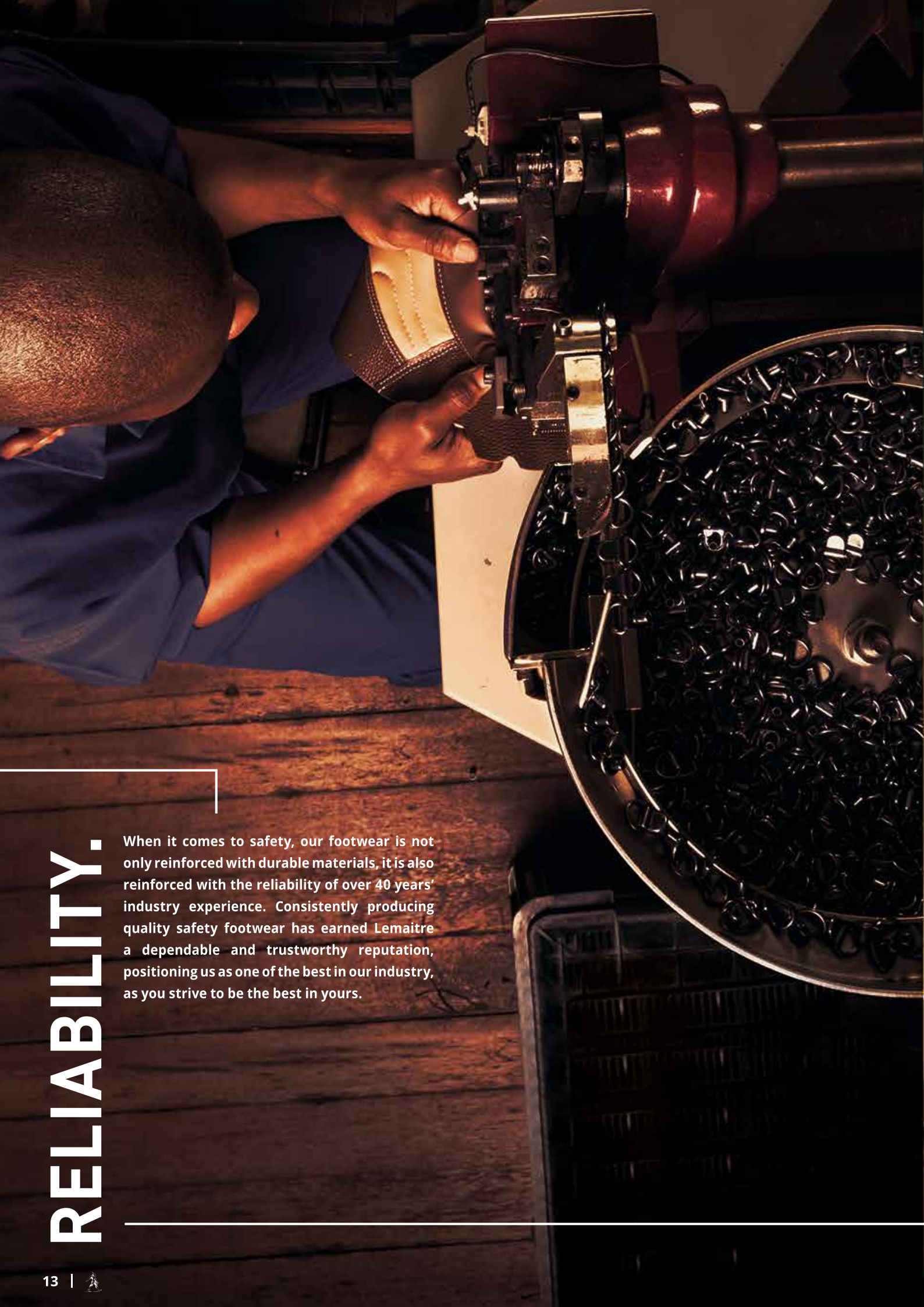
TOE CAP

- Steel – extra-wide fitting
- Available with a soft toe – 8048

SOLE

- Double Density PU/PU
- Heat resistant to 95° C
- SRA Slip-resistance rating
- Anti-static
- Acid, oil and chemical resistance rating – refer to table on p.40

SANS / ISO 20345



RELIABILITY.

When it comes to safety, our footwear is not only reinforced with durable materials, it is also reinforced with the reliability of over 40 years' industry experience. Consistently producing quality safety footwear has earned Lemaitre a dependable and trustworthy reputation, positioning us as one of the best in our industry, as you strive to be the best in yours.

OWL

8045 - STC

BLACK OR BROWN OR TAN | SIZE: 5-12

The Owl caters to the more discerning individual who requires a stylish leather look, with the benefits of a safety shoe. With conservative eyelets, the Owl allows a seamless transition from the office to the construction site.



- UPPER**
- Full-grain leather upper for enhanced durability
 - Padded collar for improved comfort and ankle support
 - 2 pair telescopic eyelets
 - Metal rivet and cap reinforcement for enhanced durability
 - Heel stiffener for shape longevity
- TOP SOCK**
- Anti-fungal, anti-bacterial and anti-static top sock
- MIDSOLE**
- Shank reinforcement for arch support
- TOE CAP**
- Steel – extra-wide fitting
- SOLE**
- Double Density PU/PU
 - Heat resistant to 95° C
 - SRA Slip-resistance rating
 - Anti-static
 - Acid, oil and chemical resistance rating – refer to table on p.40
- SANS / ISO 20345**

HIKER

8039 - STC | 8079 - SOFT TOE

BLACK OR WALNUT | SIZE: 5-12

The Hiker earned its name and has maintained its reputation by allowing wearers to traverse varying and uneven terrain. By providing the ultimate in torsion control, the Hiker ensures the wearer remains sure-footed with exceptional ankle support wherever they go. The full-grain leather upper adds durability to this boot, whilst the padded collar and bellows tongue provide the comfort that is needed.



- UPPER**
- Full-grain leather upper for enhanced durability
 - Padded collar for improved comfort and ankle support
 - Padded bellows tongue for added comfort and enhanced defense against debris entering the boot
 - 4 pair D-ring lace-up with 1 pair hooks for quick lacing and release
 - Heel stiffener for shape longevity
- TOP SOCK**
- Anti-fungal, anti-bacterial and anti-static top sock
- MIDSOLE**
- Shank reinforcement for arch support
- TOE CAP**
- Steel – extra-wide fitting
 - Available with a soft toe – 8079
- SOLE**
- Double Density PU/PU
 - Heat resistant to 95° C
 - SRA Slip-resistance rating
 - Anti-static
 - Acid, oil and chemical resistance rating – refer to table on p.40
- SANS / ISO 20345**

KITE

8044 - STC

BLACK OR BROWN OR TAN | SIZE: 5-12

The partner boot to the Owl shoe, the Kite brings style and sophistication to harsh terrains. With conservative eyelets, the Kite carries the weight of a durable safety boot offering maximum torsion control on uneven terrain.



- UPPER**
- Full-grain leather upper for enhanced durability
 - Padded collar for improved comfort
 - 3 pair telescopic eyelets
 - Metal rivet and cap reinforcement for enhanced durability
 - Heel stiffener for shape longevity
- TOP SOCK**
- Anti-fungal, anti-bacterial and anti-static top sock
- MIDSOLE**
- Shank reinforcement for arch support
- TOE CAP**
- Steel – extra-wide fitting
- SOLE**
- Double Density PU/PU
 - Heat resistant to 95° C
 - SRA Slip-resistance rating
 - Anti-static
 - Acid, oil and chemical resistance rating – refer to table on p.40
- SANS / ISO 20345**

SENTINEL

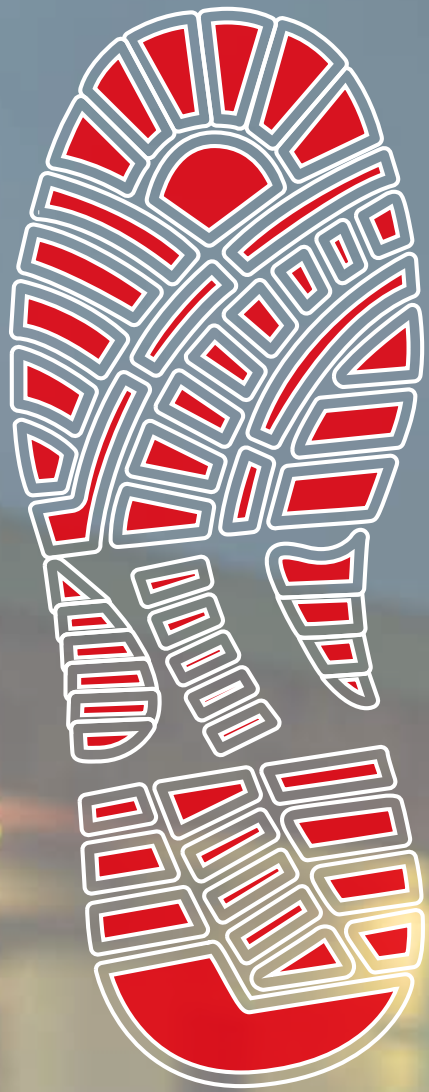
8072 - STC

BLACK | SIZE: 5-12

The Sentinel caters to those who require both comfort and stability in a security boot. The sole offers maximum torsion control, ensuring that the wearer can negotiate an array of uneven terrain and obstacles. The genuine full-grain leather upper with padded collar provides comfort to the wearer, whilst the bellows tongue provides defense against debris entering the boot.



- UPPER**
- Full-grain leather upper for enhanced durability
 - Padded collar for improved comfort and ankle support
 - Bellows tongue for defense against debris entering the boot
 - 8 pair telescopic eyelets
 - Heel stiffener for shape longevity
- TOP SOCK**
- Anti-fungal, anti-bacterial and anti-static top sock
- MIDSOLE**
- Shank reinforcement for arch support
- TOE CAP**
- Steel – extra-wide fitting
- SOLE**
- Double Density PU/PU
 - Heat resistant to 95° C
 - SRA Slip-resistance rating
 - Anti-static
 - Acid, oil and chemical resistance rating – refer to table on p.40
- SANS / ISO 20345**



2

APOLLO RANGE

SLIP-RESISTANCE

The Lemaitre Apollo range, with SRC slip-resistance rating, offers maximum slip-resistance, perfectly suited for environments where slip potential has been identified as high risk.

From petrol stations, to kitchens and hospitals, this range is designed to provide maximum surface contact ensuring maximum grip. The square cleat edges and flow lines in the cleat design of these safety shoes and boots can traverse any surface area to maximise the slip-resistance effect. Let hard-working feet stay firmly on the ground in Lemaitre's range of slip-resistant safety footwear.



CLOG

8008 - STC | 8007 - SOFT TOE
BLACK | SIZE: 2-12

The Clog has been designed to provide superior slip-resistance to those working in kitchens and hospitals. The elastic side gussets ensure easy entry and removal of the shoe, whilst the absence of Velcro straps and fasteners increase the shoe's hygienic properties. Fitted with a padded collar for enhanced comfort, the Clog is available in an extended size curve and carries a SRC slip-resistance rating.



UPPER

- Genuine Buffalo print leather upper
- Padded collar for improved comfort
- Heel stiffener for shape longevity
- Elastic side gussets for easy entry and removal

TOP SOCK

- Anti-fungal, anti-bacterial and anti-static top sock

MIDSOLE

- Shank reinforcement for arch support

TOE CAP

- Steel - wide fitting
- Available with a soft toe - 8007

SOLE

- Double Density PU/PU
- Heat resistant to 95° C
- SRC Slip-resistance rating
- Anti-static
- Acid, oil and chemical resistance rating - refer to table on p.40

SANS / ISO 20345

STRIKER

8037 - STC
BLACK | SIZE: 5-12

The Striker shoe, with a SRC slip-resistance rating, gives piece of mind to those working in conditions where oils and spills are common. Comfort is provided by the padded collar and the padded bellows tongue protects the wearer from debris entering the boot. The classic black stylings allow this shoe to fit in with most outfits, making it a popular choice in an array of industries.



UPPER

- Genuine full-grain leather upper for enhanced durability
- Padded collar for improved comfort and ankle support
- Padded bellows tongue for defense against debris entering the boot
- 3 pair telescopic eyelets with 1 pair plastic eyelet inserts
- Heel stiffener for shape longevity

TOP SOCK

- Anti-fungal, anti-bacterial and anti-static top sock

MIDSOLE

- Shank reinforcement for arch support

TOE CAP

- Steel - wide fitting

SOLE

- Double Density PU/PU
- Heat resistant to 95° C
- SRC Slip-resistance rating
- Anti-static
- Acid, oil and chemical resistance rating - refer to table on p.40

SANS / ISO 20345

HANDS-ON.

As a new pair of safety footwear is created along the way in our factory, it's passed through many hands that add their skilled touch of workmanship. We work with a collective hands-on approach where our people collaborate efficiently. Our safety footwear starts taking shape by the experienced hands of people whose skills have been passed down by up to three generations and handed to your experienced workers. Wearing Lemaitre means that you wear safety footwear that is as authentic and hard-working as you are.



SECURITY BOOT

8041 - STC | 8042 - SMS
8040 - SOFT TOE
BLACK | SIZE: 2-12

Feel protected in our Security Boot with SRC slip-resistance rating that allows the wearer to traverse surfaces in wet and slippery conditions. Manufactured with a full-grain leather upper, the padded collar and padded bellows tongue offer enhanced comfort to the wearer. This boot has found popularity amongst security guards in shopping centres due to the grip offered on slanted and tiled surfaces.



- UPPER**
- Genuine full-grain leather upper for enhanced durability
 - Padded collar for improved comfort and ankle support
 - Padded bellows tongue for defense against debris entering the boot
 - Quarter panels from nylon fabricate laminated to foam for comfort and enhanced breathability
 - 8 pair telescopic eyelets
 - Heel stiffener for shape longevity
- TOP SOCK**
- Anti-fungal, anti-bacterial and anti-static top sock
- MIDSOLE**
- Shank reinforcement for arch support
 - Available with a steel midsole – 8042
- TOE CAP**
- Steel – wide fitting
 - Available with a soft toe – 8040
- SOLE**
- Double Density PU/PU
 - Heat resistant to 95° C
 - SRC Slip-resistance rating
 - Anti-static
 - Acid, oil and chemical resistance rating – refer to table on p.40
- SANS / ISO 20345**

GALAXY

8095 - STC | 8096 - SOFT TOE
BLACK | SIZE: 5-12

The Galaxy has become a favourite for those who require the protection of a boot and the slip-resistance of an SRC rated sole. The padding in the collar ensures added comfort and ankle support to the wearer, while the bellows tongue provides superior defense against unwanted debris entering the boot. The D-ring lace-up system ensures easy entry to the boot and swift removal when it matters most.



- UPPER**
- Genuine Barton print leather upper
 - Padded collar for improved comfort and ankle support
 - Padded bellows tongue for defense against debris entering the boot
 - 4 pair D-ring lace-up for quick lacing and release
 - Heel stiffener for shape longevity
- TOP SOCK**
- Anti-fungal, anti-bacterial and anti-static top sock
- MIDSOLE**
- Shank reinforcement for arch support
- TOE CAP**
- Steel – wide fitting
 - Available with a soft toe – 8096
- SOLE**
- Double Density PU/PU
 - Heat resistant to 95° C
 - SRC Slip-resistance rating
 - Anti-static
 - Acid, oil and chemical resistance rating – refer to table on p.40
- SANS / ISO 20345**

SPORT

8050 - STC
BLACK WITH GREEN MESH COLLAR | SIZE: 2-12

The Sport shoe has become a household name at petrol filling stations throughout the country due to its SRC slip-resistance rated soles and anti-static properties. The discerning black design allows this shoe to fit seamlessly with uniform requirements and coupled with its extended size curve, the Sport has become a favourite in the industry.



- UPPER**
- Genuine Buffalo print leather upper for enhanced durability
 - Padded collar for improved comfort and ankle support
 - Padded bellows tongue for defense against debris entering the boot
 - 4 pair D-ring lace-up and 1 pair telescopic eyelets for quick lacing and release
 - Heel stiffener for shape longevity
- TOP SOCK**
- Anti-fungal, anti-bacterial and anti-static top sock
- MIDSOLE**
- Shank reinforcement for arch support
- TOE CAP**
- Steel – wide fitting
- SOLE**
- Double Density PU/PU
 - Heat resistant to 95° C
 - SRC Slip-resistance rating
 - Anti-static
 - Acid, oil and chemical resistance rating – refer to table on p.40
- SANS / ISO 20345**

LIMPOPO

8560 - STC
BLACK OR BROWN | SIZE: 2-12

Available in your colour of choice, the Limpopo merges style with functionality by providing superior grip with its SRC slip-resistance rated soles. Designed with a padded collar and bellows tongue for increased comfort, the shoe boasts a full-grain leather upper with Nubuck overlay. The inclusion of a mesh fabric in the collar and tongue ensures enhanced breathability to the wearer.



- UPPER**
- Full-grain leather upper for durability
 - Padded collar for enhanced comfort and ankle support
 - Padded bellows tongue for defense against debris entering the shoe
 - 3 pair lace guides with 1 pair hooks
 - Heel stiffener for shape longevity
- TOP SOCK**
- Anti-fungal, anti-bacterial and anti-static top sock
- MIDSOLE**
- Shank reinforcement for arch support
- TOE CAP**
- Steel – wide fitting
- SOLE**
- Double Density PU/PU
 - Heat resistant to 95° C
 - SRC Slip-resistance rating
 - Anti-static
 - Acid, oil and chemical resistance rating – refer to table on p.40
- SANS / ISO 20345**



3

MAXECO RANGE

ALL-ROUND SAFETY

The Lemaitre Maxeco range, with built-in arch support, is designed for all-round safety in the presence of general working hazards and is ideal for working environments with varying terrain, such as agriculture.

The soles offer a geometrically designed tread pattern to displace water and allow for the easy extraction of mud. Allow hard-working feet to step with ease in Lemaitre's range of all-round safety footwear.



ROBUST

8102 - STC | 8091 - SOFT TOE
BLACK OR TAN | SIZE: 2-13

The Robust shoe has found popularity in the market due to its corporate inspired design paired with safety functionality. The padded collar ensures comfort and ankle support, while the metal rivet and cap enhances the durability and adds sophistication. Available in a choice of black or tan the shoe is available with or without a steel toe cap to suit the wearer's requirements.



UPPER

- Genuine Barton print leather upper
- Padded collar for enhanced comfort and ankle support
- 3 pair eyelet lace-up
- Metal rivet and cap reinforcing for enhanced durability
- Heel stiffener for shape longevity

TOP SOCK

- Anti-fungal, anti-bacterial and anti-static top sock

MIDSOLE

- Shank reinforcement for arch support

TOE CAP

- Steel - wide fitting
- Available with a soft toe - 8091

SOLE

- Double Density PU/PU
- Heat resistant to 95° C
- SRA Slip-resistance rating
- Anti-static
- Acid, oil and chemical resistance rating - refer to table on p.40

SANS / ISO 20345

MAXECO

8031 - STC | 8011 - SMS | 8060 - SOFT TOE
BLACK OR TAN | SIZE: 2-13

The legendary Maxeco boot has made a name for itself in a number of sectors due to its ability to move seamlessly between varying terrains. The padded collar and padded bellows tongue provide comfort, while the extended size range enables procurement to easily cover the size curve of their workforce. Available with or without a steel toe cap, with the added choice of a steel midsole, the Maxeco boot has become the go-to boot of choice in the presence of general working hazards.



UPPER

- Genuine Barton print leather upper
- Padded collar for enhanced comfort and ankle support
- Padded bellows tongue for defense against debris entering the boot
- 4 pair D-ring lace-up for quick lacing and release
- Heel stiffener for shape longevity

TOP SOCK

- Anti-fungal, anti-bacterial and anti-static top sock

MIDSOLE

- Shank reinforcement for arch support
- Available with a steel midsole - 8011

TOE CAP

- Steel - wide fitting
- Available with a soft toe - 8060

SOLE

- Double Density PU/PU
- Heat resistant to 95° C
- SRA Slip-resistance rating
- Anti-static
- Acid, oil and chemical resistance rating - refer to table on p.40

SANS / ISO 20345



LOCAL.

Our understanding of South African people is kept top of mind in the design of Lemaitre safety footwear, shaping them to fit the specifications of the South African foot. It's our shared commonality of being South African that unites us, being proudly manufactured locally and providing jobs for our people. We are as unique as our feet, keeping you safe at work every step of the way.

METAGUARD

8061 - STC
BLACK | SIZE: 3-13

Born from a need for an all-round safety lace-up boot that provides enhanced protection to the metatarsal area, the Maxeco boot was updated to include a highly durable metaguard. The Metaguard safety boot provides an extended size curve making it easy for procurement departments to provide the same spec boot for their staff.



- UPPER**
- Genuine Barton print leather upper
 - Padded collar for enhanced comfort and ankle support
 - Padded bellows tongue for defense against debris entering the boot
 - 4 pair D-ring lace-up for quick lacing and release
 - Heel stiffener for shape longevity
 - Polypropylene metaguard for enhanced protection of the metatarsal bones
- TOP SOCK**
- Anti-fungal, anti-bacterial and anti-static top sock
- MIDSOLE**
- Shank reinforcement for arch support
- TOE CAP**
- Steel – wide fitting
- SOLE**
- Double Density PU/PU
 - Heat resistant to 95° C
 - SRA Slip-resistance rating
 - Anti-static
 - Acid, oil and chemical resistance rating – refer to table on p.40
- SANS / ISO 20345**

ZEUS

8117 - STC | 8118 - SOFT TOE
BLACK OR BROWN | SIZE: 5-12

Proudly positioned as the country's top selling Chelsea boot, the Zeus is now available on the lighter and wider Gladius sole unit. Fitted with elastic side gussets and pull-tabs to allow for easy entry and exit into the boot, the Zeus is available in a choice of black or brown and can be purchased with or without a steel toe cap.



- UPPER**
- Full-grain leather upper for durability
 - Elastic side gussets and 2 pull-tabs for easy entry and exit
 - Heel stiffener for shape longevity
- TOP SOCK**
- Anti-fungal, anti-bacterial and anti-static top sock
- MIDSOLE**
- Shank reinforcement for arch support
- TOE CAP**
- Steel – wide fitting
 - Available with a soft toe – 8118
- SOLE**
- Double Density PU/PU
 - Heat resistant to 95° C
 - SRA Slip-resistance rating
 - Anti-static
 - Acid, oil and chemical resistance rating – refer to table on p.40
- SANS / ISO 20345**

TURTLE

8032 - STC
BLACK | SIZE: 5-12

Born from a need for an all-round safety pull-on boot that provides enhanced protection to the metatarsal area, the Zeus boot was updated to include a metaguard. This technical work boot includes a permanently attached Polypropylene metatarsal deflector to protect the metatarsal bones of the foot from falling objects.



- UPPER**
- Genuine full-grain leather upper for durability
 - Elastic side gussets and pull-tab for easy entry and exit
 - Heel stiffener for shape longevity
 - Polypropylene metaguard for enhanced protection of the metatarsal bones
- TOP SOCK**
- Anti-fungal, anti-bacterial and anti-static top sock
- MIDSOLE**
- Shank reinforcement for arch support
- TOE CAP**
- Steel – wide fitting
- SOLE**
- Double Density PU/PU
 - Heat resistant to 95° C
 - SRA Slip-resistance rating
 - Anti-static
 - Acid, oil and chemical resistance rating – refer to table on p.40
- SANS / ISO 20345**

EROS

8010 - STC
BLACK OR BROWN | SIZE: 5-12

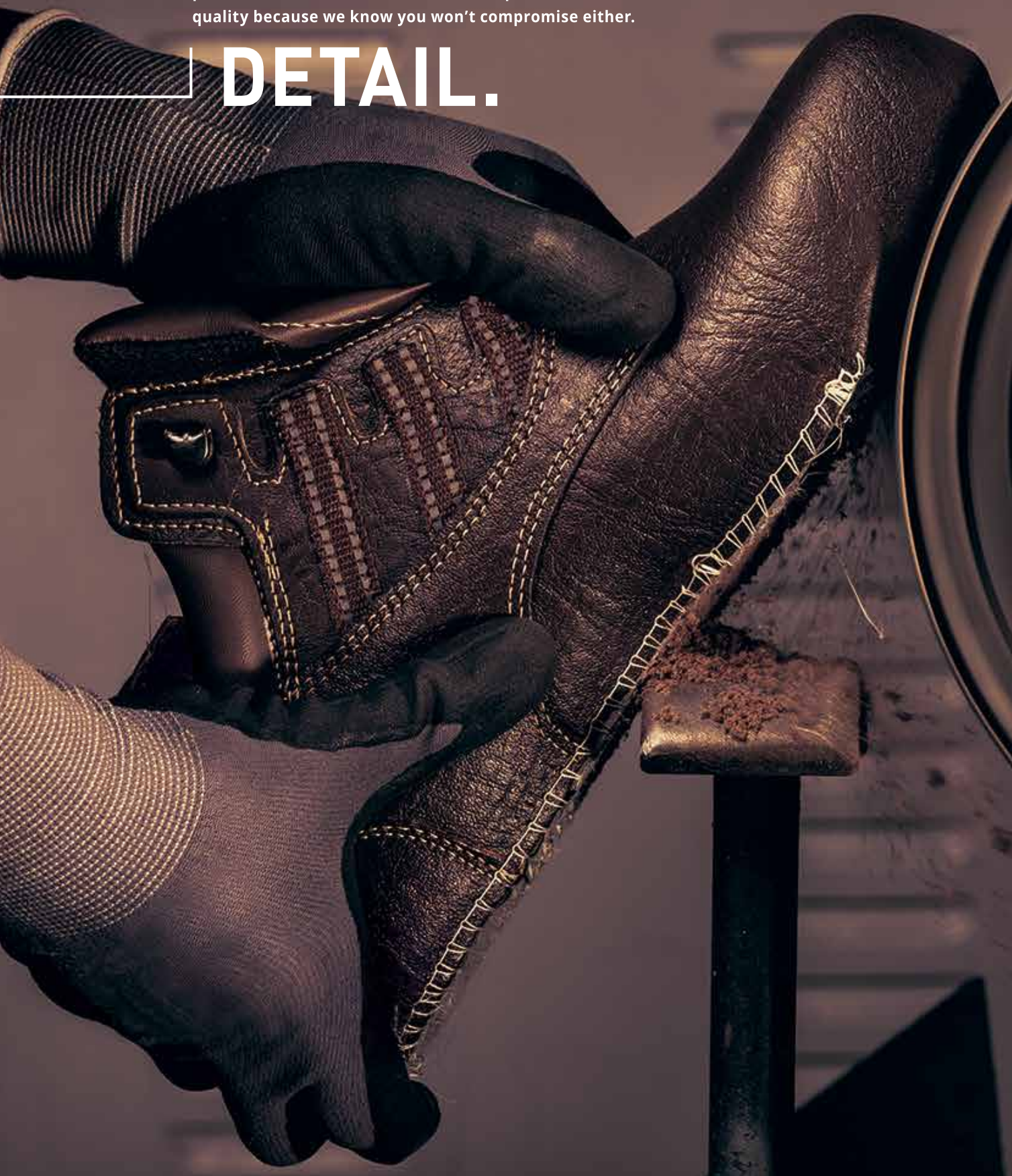
This slip-on-slip-off shoe has found popularity amongst those looking for a no-hassle safety shoe. The simple stylings and choice of colour, has made this shoe a favourite amongst management personnel allowing them to move seamlessly between the office and factory environments. Fitted on the lighter Gladius sole unit, the Eros provides increased slip-resistance and better stability.



- UPPER**
- Full-grain leather upper for enhanced durability
 - Padded collar and lip for improved comfort and ankle support
 - Elastic side gussets for quick entry and exit that also accommodates varying foot widths
 - Heel stiffener for shape longevity
- TOP SOCK**
- Anti-fungal, anti-bacterial and anti-static top sock
- MIDSOLE**
- Shank reinforcement for arch support
- TOE CAP**
- Steel – wide fitting
- SOLE**
- Double Density PU/PU
 - Heat resistant to 95° C
 - SRA Slip-resistance rating
 - Anti-static
 - Acid, oil and chemical resistance rating – refer to table on p.40
- SANS / ISO 20345**

Before our safety footwear reaches the final stages of our production line, they are meticulously inspected to meet our quality standards. Each pair is checked for any imperfections, with eyes fixated on the smallest of details. We respect all workers and the work that they do, making sure that the person who wears a pair of Lemaitre safety footwear is wearing a product that is as perfect as it can be. We won't ever compromise on our attention to detail and quality because we know you won't compromise either.

DETAIL.



MAXIMUS

8074 - STC

BLACK WITH RED STITCHING | SIZE: 3-13

Designed to incorporate technological advancements in the all-round safety category, the latest addition to the Maxeco range brings the wearer more in all-round safety. It incorporates a lighter sole unit, and increased width in the sole enhances the slip-resistance of the boot providing better stability and reduced shock impact. The inclusion of a reflective insert at the rear of the boot ensures increased visibility in low light.



UPPER

- Genuine Barton print leather upper
- Padded collar for enhanced comfort and ankle support
- Padded bellows tongue for defense against debris entering the boot
- Reflective inserts for increased visibility in low light
- Heel stiffener for shape longevity
- 4 pair D-ring lace-up for quick lacing and release

TOP SOCK

- Anti-fungal, anti-bacterial and anti-static top sock

MIDSOLE

- Shank reinforcement for arch support

TOE CAP

- Steel – wide fitting

SOLE

- Double Density PU/PU
- Heat resistant to 95° C
- SRA Slip-resistance rating
- Anti-static
- Acid, oil and chemical resistance rating – refer to table on p.40

SANS / ISO 20345

SPARTACUS

8075 - STC

BLACK WITH RED STITCHING | SIZE: 3-13

The partner shoe to the Maximus boot, Spartacus incorporates technological advancements in the all-round safety category to bring the wearer more in all-round safety. It incorporates a lighter sole unit, and increased width in the sole enhances the slip-resistance of the boot providing better stability and reduced shock impact. The inclusion of a reflective insert at the rear of the shoe ensures increased visibility in low light.



UPPER

- Genuine Barton print leather upper
- Padded collar for enhanced comfort and ankle support
- Padded bellows tongue for defense against debris entering the shoe
- Reflective inserts for increased visibility in low light
- Heel stiffener for shape longevity
- 3 pair D-ring lace up for quick lacing and release

TOP SOCK

- Anti-fungal, anti-bacterial and anti-static top sock

MIDSOLE

- Shank reinforcement for arch support

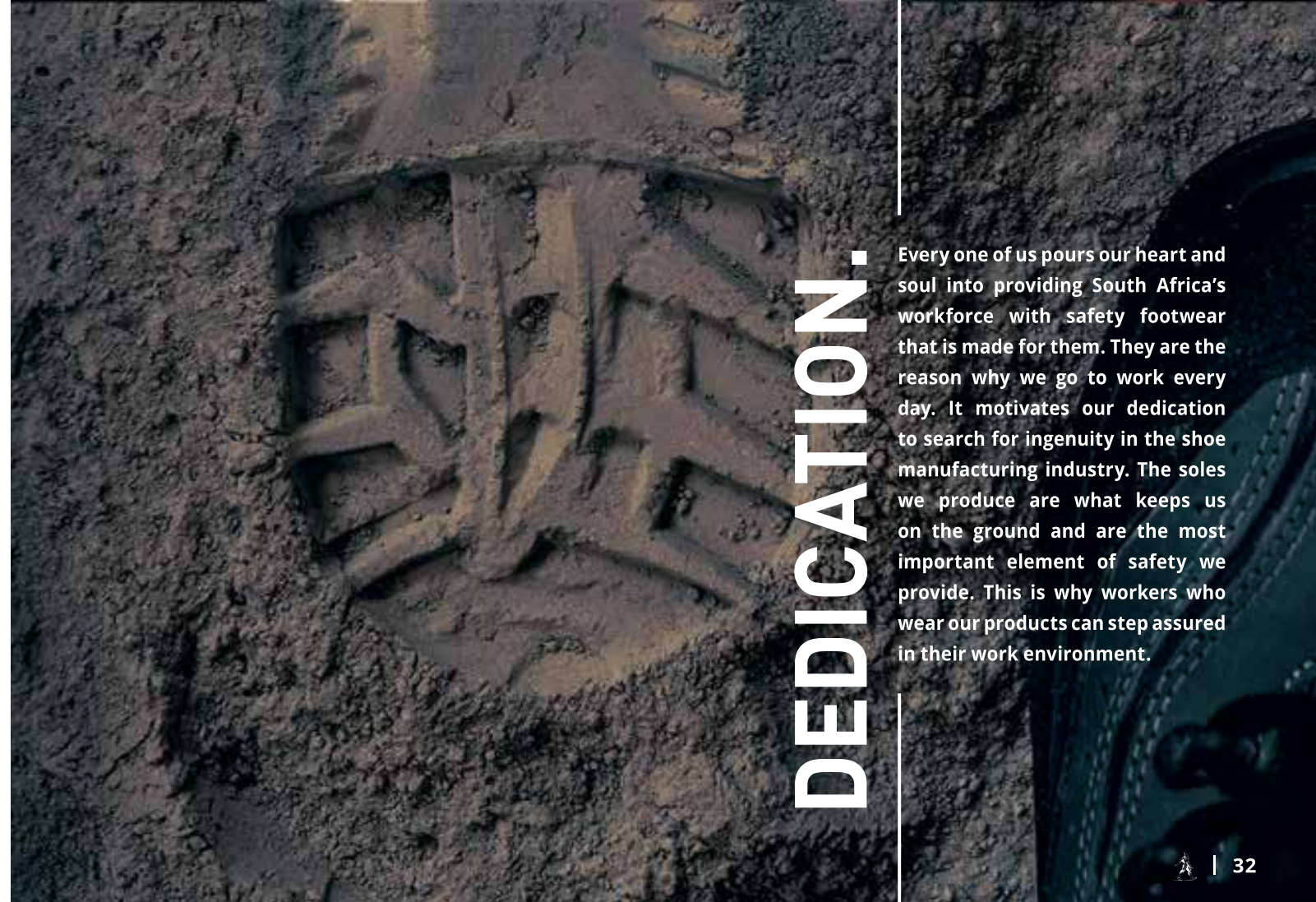
TOE CAP

- Steel – wide fitting

SOLE

- Double Density PU/PU
- Heat resistant to 95° C
- SRA Slip-resistance rating
- Anti-static
- Acid, oil and chemical resistance rating – refer to table on p.40

SANS / ISO 20345



DEDICATION.

Every one of us pours our heart and soul into providing South Africa's workforce with safety footwear that is made for them. They are the reason why we go to work every day. It motivates our dedication to search for ingenuity in the shoe manufacturing industry. The soles we produce are what keeps us on the ground and are the most important element of safety we provide. This is why workers who wear our products can step assured in their work environment.



4

PARABOLIC RANGE

COMFORT & ANTI-FATIGUE SUPPORT

The Lemaitre Parabolic range, with a thick polyurethane midsole, provides extra comfort for workers who spend long periods of time on their feet in industries such as manufacturing.

The parabolic curve in the sole adds "spring" by absorbing the wearer's mass. Discomfort is further eliminated by the deep cleats and air movement channels preventing heat dissipation through the sole. Treat hard-working feet to Lemaitre's range of comfort inspired safety footwear.



ODYSSEY

8000 - STC
BROWN | SIZE: 5-12

The Odyssey safety boot is designed for maximum comfort to suit workers who spend long hours on their feet. The comfort provided by the padded collar and padded bellows tongue is complemented by the cushion impact provided by the parabolic curve in the sole. The reflective Ghillie lacing loops enhance the visibility for those working on roads and at night and the double stitching of the leather upper adds extra strength to enhance the durability of the boot.



UPPER

- Genuine Apollo print leather upper
- Padded collar for enhanced comfort and ankle support
- Padded bellows tongue for comfort and defense against debris entering the boot
- Metal rivet and cap reinforcing for enhanced durability
- 1 pair telescopic eyelets and 3 pair reflective Ghillie loops with hooks
- Heel stiffener for shape longevity

TOP SOCK

- Anti-fungal, anti-bacterial and anti-static top sock

MIDSOLE

- Shank reinforcement for arch support

TOE CAP

- Steel – extra-wide fitting

SOLE

- Double Density PU/PU with concave curve to cushion impact
- Heat resistant to 95° C
- SRA Slip-resistance rating
- Anti-static
- Acid, oil and chemical resistance rating – refer to table on p.40

SANS / ISO 20345

EXPLORER

8004 - STC
BLACK AND GREY | SIZE: 5-12

The Explorer safety shoe, with extra-wide fitting steel toe cap, is recommended for individuals who spend long hours on their feet. The shoe boasts a full-grain leather upper with padded collar and bellows tongue and features easy lacing D-rings for fast removal in an emergency. The parabolic concave curve of the sole cushions impact and adds 'spring' by absorbing the wearer's mass.



UPPER

- Full-grain leather upper for durability
- Padded collar for enhanced comfort and ankle support
- Bellows tongue for defense against debris entering the boot
- Heel stiffener for shape longevity
- 5 pair D-ring lace-up for quick lacing and release

TOP SOCK

- Anti-fungal, anti-bacterial and anti-static top sock

MIDSOLE

- Shank reinforcement for arch support

TOE CAP

- Steel – extra-wide fitting

SOLE

- Double Density PU/PU with concave curve to cushion impact
- Heat resistant to 95° C
- SRA Slip-resistance rating
- Anti-static
- Acid, oil and chemical resistance rating – refer to table on p.40

SANS / ISO 20345

NOMAD

8001 - STC
BLACK OR BROWN | SIZE: 5-12

The Nomad safety boot is recommended for those spending long hours on their feet. The full bellows tongue gives utmost protection from debris entering the footwear while the padded collar offers exceptional comfort and ankle support. The Nomad's D-ring lacing system ensures quick release when it matters most and the extra-wide steel toe cap ensures the perfect fit for the South African foot.



UPPER

- Genuine Barton print leather upper
- Padded collar for enhanced comfort and ankle support
- Padded bellows tongue for defense against debris entering the boot
- Reflective piping for enhanced visibility at night
- 4 pair D-ring lace-up for quick lacing and release
- Heel stiffener for shape longevity

TOP SOCK

- Anti-fungal, anti-bacterial and anti-static top sock

MIDSOLE

- Shank reinforcement for arch support

TOE CAP

- Steel – extra-wide fitting

SOLE

- Double Density PU/PU with concave curve to cushion impact
- Heat resistant to 95° C
- SRA Slip-resistance rating
- Anti-static
- Acid, oil and chemical resistance rating – refer to table on p.40

SANS / ISO 20345

HUNTER

8006 - STC
BLACK AND GREY | SIZE: 5-12

The partner to the Explorer shoe, the Hunter boot is designed for comfort and recommended for those who spend extended hours on their feet. A durable full-grain leather upper is paired with a padded mesh collar to offer comfort and ankle support to the wearer. The padded bellows tongue ensures defense against debris entering the footwear and the D-ring lacing system allows fast removal of the boot when needed most.



UPPER

- Full-grain leather upper for durability
- Padded collar for enhanced comfort and ankle support
- Padded bellows tongue for enhanced comfort and defense against debris entering the boot
- Heel stiffener for shape longevity
- 5 pair D-ring lace-up for quick lacing and release

TOP SOCK

- Anti-fungal, anti-bacterial and anti-static top sock

MIDSOLE

- Shank reinforcement for arch support

TOE CAP

- Steel – extra-wide fitting

SOLE

- Double Density PU/PU with concave curve to cushion impact
- Heat resistant to 95° C
- SRA Slip-resistance rating
- Anti-static
- Acid, oil and chemical resistance rating – refer to table on p.40

SANS / ISO 20345

QUEST

8002 - STC

BLACK OR BROWN | SIZE: 5-12

The Quest safety shoe offers superior comfort for wearers who spend long hours on their feet. The fashionable double stitched upper with metal rivets provides extra strength and durability, while the padded collar offers enhanced comfort and ankle support. The sole has the inclusion of a parabolic concave curve to cushion impact and add 'spring' by absorbing the wearer's mass.



UPPER

- Genuine Apollo print leather upper
- Padded collar for enhanced comfort and ankle support
- Metal rivet and cap reinforcing for enhanced durability
- 4 pair telescopic eyelets
- Heel stiffener for shape longevity

TOP SOCK

- Anti-fungal, anti-bacterial and anti-static top sock

MIDSOLE

- Shank reinforcement for arch support

TOE CAP

- Steel - extra-wide fitting

SOLE

- Double Density PU/PU with concave curve to cushion impact
- Heat resistant to 95° C
- SRA Slip-resistance rating
- Anti-static
- Acid, oil and chemical resistance rating - refer to table on p.40

SANS / ISO 20345

OUTENIQUA

8013 - STC

BLACK OR BROWN | SIZE: 5-12

Stand for extended hours with the Outeniqua boot, offering extreme comfort and breathability. The strategically placed mesh fabric assists with ventilation and aids in keeping feet cool in warm environments. The reflective Ghillie loops enhance the visibility for those working on roads and at night and the parabolic concave curve in the sole cushions impact and adds 'spring' by absorbing the wearers mass.



UPPER

- Full-grain leather upper for durability
- Padded collar for enhanced comfort and ankle support
- Bellows tongue for defense against debris entering the boot
- Heel stiffener for shape longevity
- 2 pair reflective Ghillie loops and 2 pair metal lace guides with hooks

TOP SOCK

- Anti-fungal, anti-bacterial and anti-static top sock

MIDSOLE

- Shank reinforcement for arch support

TOE CAP

- Steel - extra-wide fitting

SOLE

- Double Density PU/PU with concave curve to cushion impact
- Heat resistant to 95° C
- SRA Slip-resistance rating
- Anti-static
- Acid, oil and chemical resistance rating - refer to table on p.40

SANS / ISO 20345

PRIDE.

As our safety footwear is placed in a Lemaitre shoebox and makes its way to our distributors, we take pride in completing an honest day's work, understanding and appreciating our part in the bigger picture, as we build South Africa together. We proudly hand over our craft, as we pass it on from one worker to another.





SABS ISO 9001 CERTIFIED

Meets the requirements of the **South African Bureau of Standards** in terms of:
SABS ISO 9001 FACTORY
SABS ISO 20345

SAFLIA

BBF Safety Group (Pty) Ltd. is a member of SAFLIA (South African Footwear and Leather Industries Association)
www.safliia.co.za

SAFLEC

BBF Safety Group (Pty) Ltd. is a member of SAFLEC (South African Footwear and Leather Export Council)
www.saflec.co.za

SAPEMA

BBF Safety Group (Pty) Ltd. is a member of SAPEMA (South African Protective Equipment Marketing Association)
www.sapema.org

SAICA

Numerous directors of BBF Safety Group (Pty) Ltd. are members of SAICA (South African Institute of Chartered Accountants) in their personal capacity
www.saica.co.za

NELSON MANDELA BAY BUSINESS CHAMBER

The Business Chamber is a non-profit business association, representative of a broad spectrum of businesses in Nelson Mandela Bay.
www.nmbbusinesschamber.co.za

CHEMICAL RESISTANCE TABLE

5 EXCELLENT 0-3% CHANGE 4 GOOD 3-15% CHANGE 3 FAIR 16-30% CHANGE 2 POOR MORE THAN 30% CHANGE 1 DISSOLVES

THIS TABLE IS ONLY RELEVANT TO POLYURETHANE SOLES

Acetic Acid 3 n	Dimethyl Acetamide	Methylene Chloride
Acetone	Dimethyl Formamide	Mineral Oil
Aluminium Chloride 10% Sol.	Distilled Water	Nitric Acid 3 n
Ammonia 3 n	Ethanol	N-Methyl Pyrrolidone
Ammonium Chloride 10% Sol.	Ether	Ozone
Aniline	Ethyl Acetate	Paraffin Oil
ASTM-Fuel A	Ethylene Chloride	Perchloroethylene
ASTM-Fuel B	Ferric Chloride 10% Sol.	Petroleum
ASTM-Fuel C	Formic Acid 3 n	Petroleum Ether
ASTM-Oil 1	Freon 12	Phosphoric Acid 3 n
ASTM-Oil 2	Freon 22	Potassium Chloride 10% & 40% Sol.
ASTM-Oil 3	Gear Box Oil SAE 90	Potassium Dichromate 10% Sol.
Benzene	Glycerine	Potassium Hydroxide 3 n
Benzyl Alcohol	Glycol	Potassium Nitrate
Bleach	Hydrochloric Acid 3 n	Potassium Permanganate 5% Sol.
Brake Fluid ATE	Hydrogen Peroxide 3%	Propane
Brake Fluid ATS	Iso-Octane = Fuel 1	Pyridine
Butane	Iso-Octane 70%:30% Toluene=Fuel 2	Sea Water(Technical)
Butyl Acetate	Iso-Octane 50%:50% Toluene=Fuel 3	Sodium Bisulphate 10% Sol.
Butyl Alcohol	Iso-Propanol	Sodium Chloride 10% Sol.
Calcium Chloride 10% & 40% Sol.	Kerosine	Sodium Hypochlorite Sol. PH 13
Carbon Disulphide	Lactic Acid 3 n	Sodium Sulphite
Carbon Tetrachloride	Lubricating Grease: Calcium based	Sulphuric Acid 3 n
Caustic Soda Sol. 10%	Lithium based	Terpentine (Pine Oil)
Chlorobenzene	Sodium based	Tetrachlorethylene
Chloroform	Magnesium Chloride 10% & 30% Sol.	Tetrahydrofuran
Chromic Acid 3 n	Methane	Toluene
Citronic Acid 3 n	Methanol	Trichloroethylene
Cyclohexane	Methyl Acetate	Xylene
Cyclohexanon	Methyl Ethyl Ketone	
Decalin	Methyl Glycol	
Diesel Oil	Methyl Glycol Acetate	

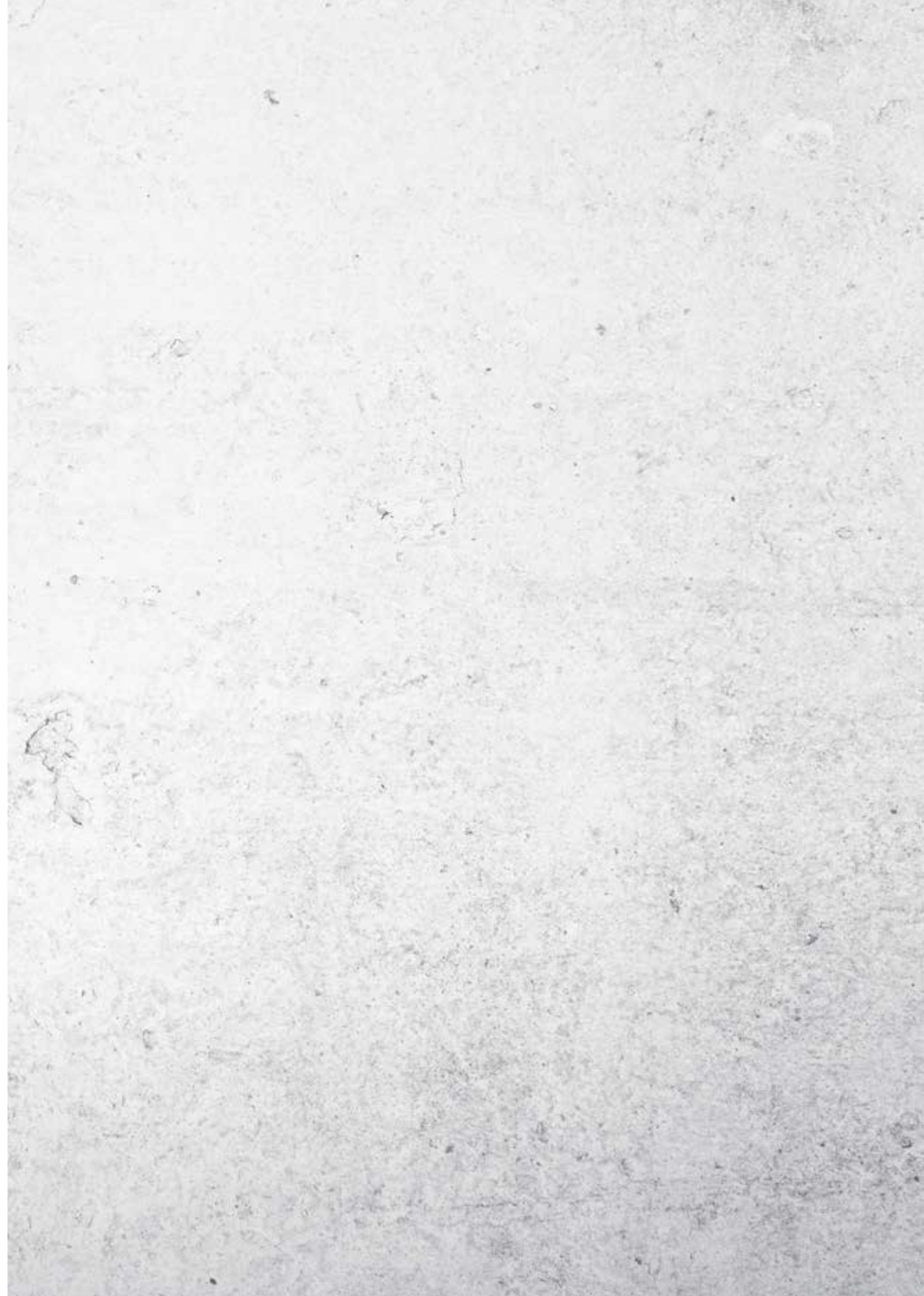
If you are exposed to any of the acids, oils or chemicals that rate 1, 2 or 3 on the table we recommend a rubber sole/boot.

The above table should be used as a general guide only. Performance in the actual working environment will depend upon the following: Temperature of chemicals, concentration of chemicals and duration of exposure to chemicals.

NOTES



A series of horizontal dotted lines for writing notes, spanning the width of the page below the header.





LEMAITRE

**SOURCED AND MANUFACTURED
IN SOUTH AFRICA**



www.lemaitre.co.za

TEL: +27 41 484 3291

FAX: +27 41 484 2985

EMAIL: info@bbfsafety.com

POSTAL ADDRESS:

PO Box 3019
Port Elizabeth
6056

PHYSICAL ADDRESS:

2 Paterson Road
North End
Port Elizabeth
6001



SABS ISO 9001 CERTIFIED